

CN Renewable Resources Provides HFIA \$25,000 for Strawberry Guava Eradication Research Trials

CN Renewable Resources, a Honua Ola Bioenergy sister company, will provide \$25,000 for HFIA’s [Healthy & Productive Forest Initiative](#). After two years of research and planning CN Renewable Resources has made it possible for HFIA to initiate research trials for the control of the invasive species Strawberry Guava (*Psidium Cattleium*).

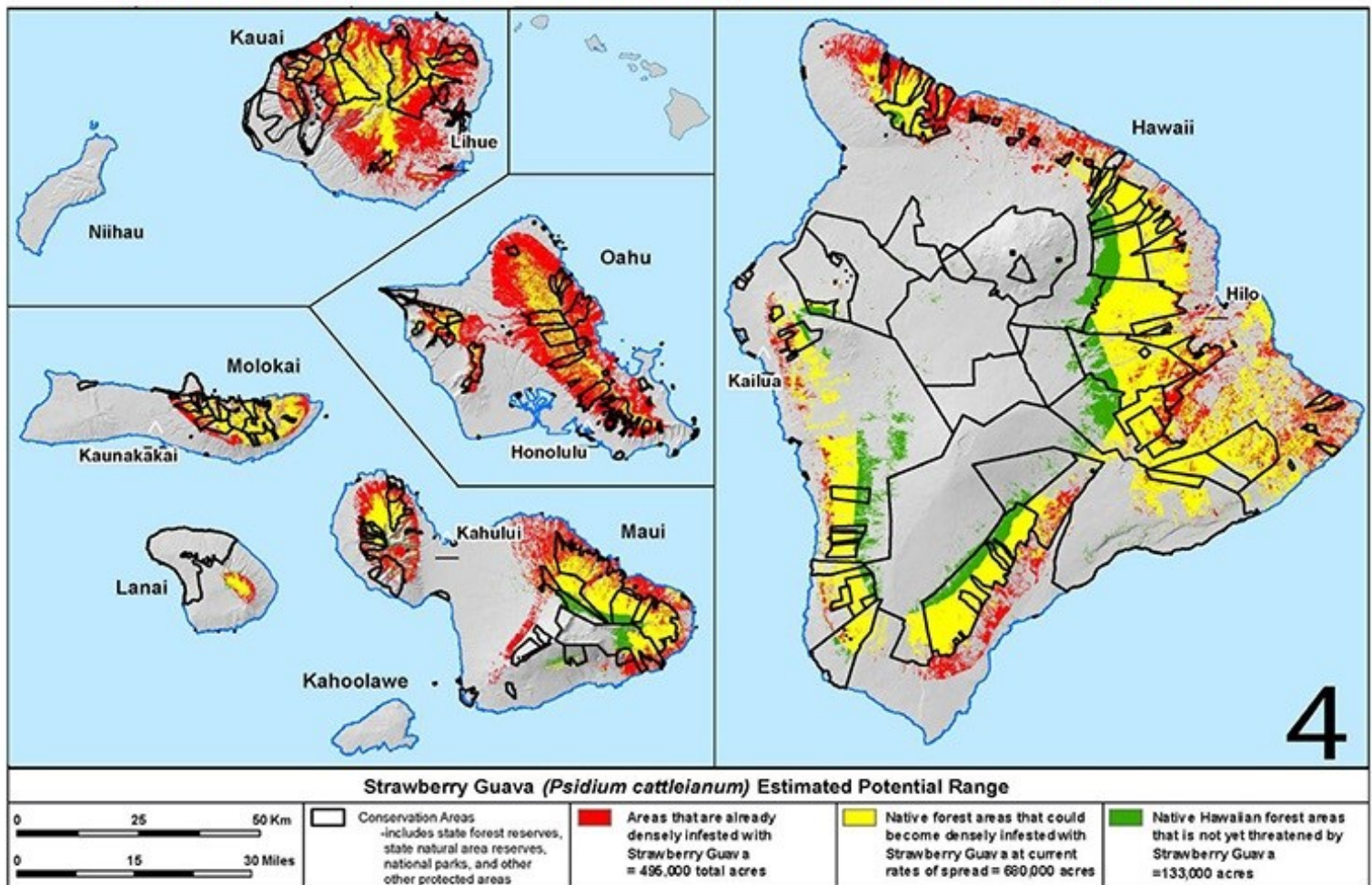
The goal of the Initiative is to substantially reduce the environmental and economic impacts of a ~ 600,000-acre infestation of strawberry guava on Hawai‘i Island. The two primary tools to be used for the research trials will be biocontrol utilizing an approved insect *Tetracoccus Ovatus* (T. Ovatus), which galls the leaves of strawberry guava and substantially reduces its vigor; and physical removal of strawberry guava using heavy equipment.

The objectives of the Healthy & Productive Forests Initiative are to:

- Develop and demonstrate operational scale methods for rehabilitating forests threatened by invasive species.
- Disseminate information on cost and lost opportunities presented by weed-infested forests.
- Disseminate efficient, effective techniques and forest management methodologies to forest landowners and encourage immediate action.
- Promote the return of sizable portions of Hawaii’s forests to fulfilling the purposes intended by the legislature.

MAP OF CURRENT AND POTENTIAL STRAWBERRY GUAVA INFESTATIONS IN HAWAI‘I

Where it is and where it could continue to spread without the help of biocontrol



Source: [Hawaiian Ecosystems at Risk \(HEAR\) project](#)